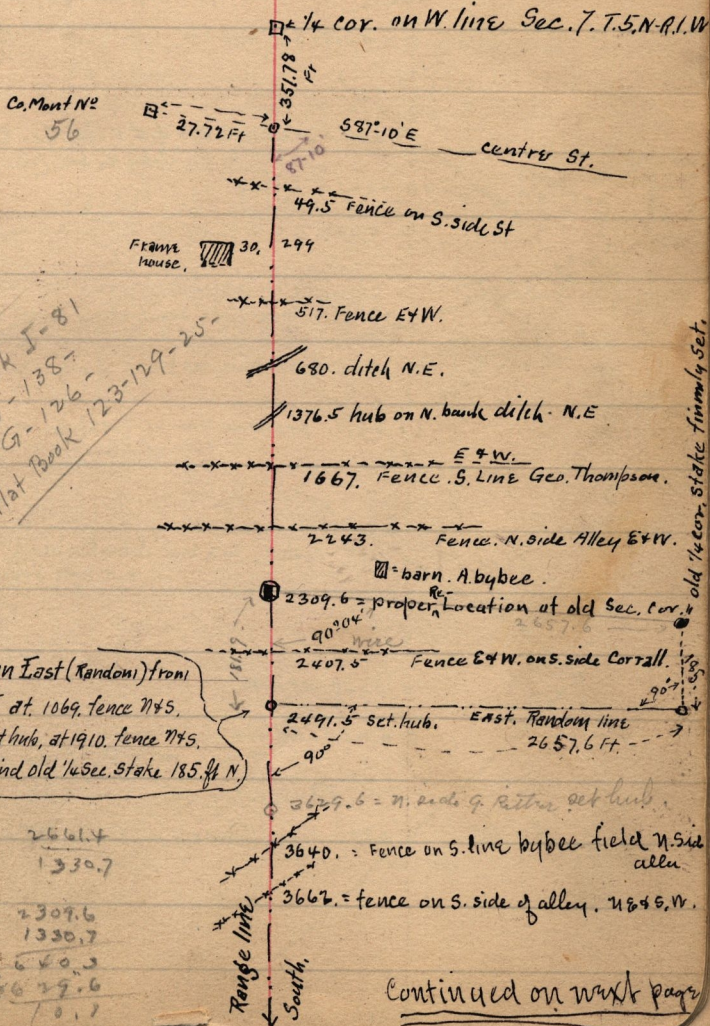


March 3-4-1898.

Notes. Survey made at River Dale for Geo. M. Ritter.

Part of Sec. 18 - T. 5. N. - R. 1. W. beg. at Co. Mont. N<sup>o</sup> in centre of Street near Riverdale School. 351.78 ft S. and 27.72 ft N 87° 10' W. from 1/4 cor. on W. line of Sec. 7. T. 5. N. - R. 1. W. sketched as follows.



See Book I-81  
 " J-138-  
 " G-126-  
 Plat Book 123-129-25-

Note! line ran East (Random) from  
 Sta 2491.5 at 1069. fence N & S.  
 at 1405. set hub. at 1910. fence N & S.  
 at 2657.6 find old 1/4 sec. stake 185. ft N.

- 2309.6      2661.4
- 1320.      1330.7
- 3629.6
- 2309.6
- 1330.7
- 3660.3
- 3629.6
- 70.1

Continued on next page